



**Kanawha County Emergency Ambulance Authority**  
 601 Brooks Street  
 Charleston, West Virginia 25301

# KCEAA

VOLUME 1 ISSUE II

NOVEMBER 2006

Providing professional health care and support services while maintaining a standard of excellence.

## Did you know?

KCEAA has over 200 trained EMS Providers serving the Medical Needs of the Kanawha Valley

## KCEAA Teams with St. Albans

Kanawha County Emergency Ambulance Authority and St. Albans Drug Task Force are partnering to fight the drug problems in St. Albans. KCEAA Staff and Mental Health professionals will serve as co-chairs on the SAFE—CARING—HEALTHY Community project to treat individuals in their fight against substance abuse.

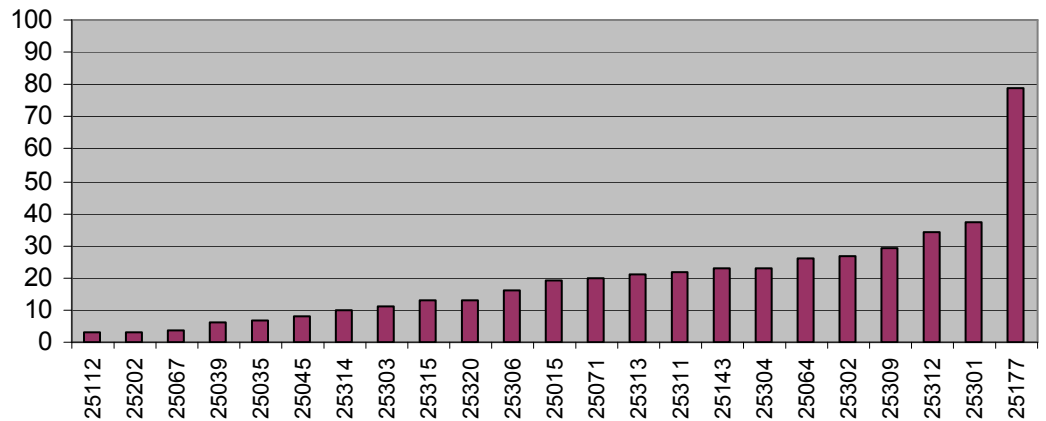
Upon receiving that emergency call and arriving at the scene, KCEAA medics complete a "scene size-up". Often times the EMS crew is the first to aid in the care of individuals involved with substance abuse.

KCEAA has further supported the Steering Committee with information from their call data base. The graph shown below indicates the number of overdose patients transported based on area code compared side by side.

## In This Issue

St. Albans	Page 1
Board Spotlight	Page 2
Employee Spotlight	Page 2
KC Halloween	Page 2
New Employees	Page 3
CISM Team	Page 3
CPR Classes	Page 3
Tyler Mtn. Day Care	Page 3
CCT Class in 2007	Page 4

## Zip Codes with >2 Overdoses since 1/1/05



Kanawha County Emergency Ambulance Authority also supports the St. Albans Drug Task Force through our Chaplain Program. The KCEAA Chaplain Program has been involved with the St. Albans Ministerial Association since it's inception in 2000.

KCEAA will continue to support the citizens of St. Albans with comprehensive medical care and pastoral ministry and are dedicated to help Mayor Calloway in the mission to improve the value of life for the City of St. Albans.

## Board Spotlight Chuck Blair



The Honorable Chuck Blair, East Bank Mayor for over 30 years, has been a member of our KCEAA Board since our inception in 1977. He has generously served our Board as President and Executive Committee Chair and as a member of our Budget & Finance and Personnel Committees.

Mayor Blair remembers

when KCEAA had seven employees funded by the Federal Government and noted, "It is amazing to see where we are now as to where we came from. It is a privilege to work with true professionals that help people every day."

Chuck and his wife, Sherry, live in East Bank and have one daughter, Morgan, who works for KCEAA as scheduler. He is a member of East Bank United Methodist Church where he serves as Lay Leader and President of the Administrative Council. He is also a Gideon.

Chuck brings true life experience to our organization from his church and government positions that is very evident in the way he supports our Peer Support programs.

Morgan, a full time Scheduler at KCEAA, started as an intern about a year and a half ago. She is a 2006 Graduate of West Virginia State University with a Bachelors of Science Degree in Business Administration with her field of concentration in Marketing.

Since beginning at KCEAA, Morgan has enrolled in an EMT class. She enjoys talking with our field personnel and really gets to know them

## Employee Spotlight Morgan Blair

in her daily routine of

scheduling.

Morgan is a life long member of East Bank United Methodist Church where she is in charge of the nursery.



KC filmed four different commercials to promote safety.

### **BE REFLECTIVE**

KC reminded children to carry a flashlight and wear reflective clothing or place reflective tape on their costumes so they could be seen in the dark.

### **WALK ON SIDEWALKS**

KC reminded children to stay on sidewalks whenever possible.

## KC Promotes Halloween Safety

### **APPROACH ONLY HOUSES THAT ARE LIT**

When KC's sidekick, Kevin Jarrett, started to visit a home that was dark, KC reminded Kevin to only Trick-or-Treat at homes that are lit.

### **WALK, DON'T RUN**

KC reminded Kevin that running in your costume in the dark is dangerous and you should always walk carefully.



KC's friend, nine year old Kevin Jarrett, helped teach these important safety lessons to area children in the days preceding Halloween. Kevin is in the 4th grade at Scott Teays Elementary and is the son of Chaplain Mike Jarrett.

## KCEAA welcomes NEW EMPLOYEES



Front: Patricia Feltner, Josh Johnson,  
Robert Carpenter  
Back: Joel Feltner, Michael Hart

## CISM Team assists Agencies

Critical Incident Stress Management (CISM) is a comprehensive, integrative, multi-component crisis intervention system. CISM is considered comprehensive because it consists of multiple crisis intervention components, which functionally span the entire temporal spectrum of a crisis.

CISM interventions range from the pre-crisis phase through the acute crisis phase, and into the post-crisis phase. CISM also consists of interventions which may be applied to Emergency Response Agencies as well as individuals.

## CPR Classes open to Public



The KCEAA monthly CPR and First Aid class will be held on Friday, November 17 and is open to the public. All classes are taught by our licensed instructors and are held at our 611 Brooks Street Operations Classroom. For additional information, please contact Gary Davis at 304.345.2312 Ext 171.

## KCEAA visits TYLER MOUNTAIN YMCA DAY CARE



## KCEAA

601 Brooks Street  
Charleston, WV 25301



[www.kceaa.org](http://www.kceaa.org)

## KCEAA to offer Critical Care Transport Class in 2007

Kanawha County Emergency Ambulance Authority is sponsoring a Critical Care Transport class open to all eligible EMT-Paramedics and Registered Nurses statewide.

This program is affiliated with Marshall University Community and Technical College and will offer six (6)



hours of 200 level undergraduate college credit. Tuition is \$750 and includes clinical shirt, course materials and skills station supplies.

Classes will begin Thursday, March 1, 2007 to run for 10 consecutive weeks and will be conducted at the KCEAA

Training Center located at 601 Brooks Street.

Students will obtain knowledge and skills necessary to manage the critical patient during transfers between hospitals, specialty referral centers and extended care facilities.

For more information, contact the KCEAA Training Division at 304.345.2312 or email Kim Johnson at [kimjohnson@kceaa.org](mailto:kimjohnson@kceaa.org).

Seating is limited.